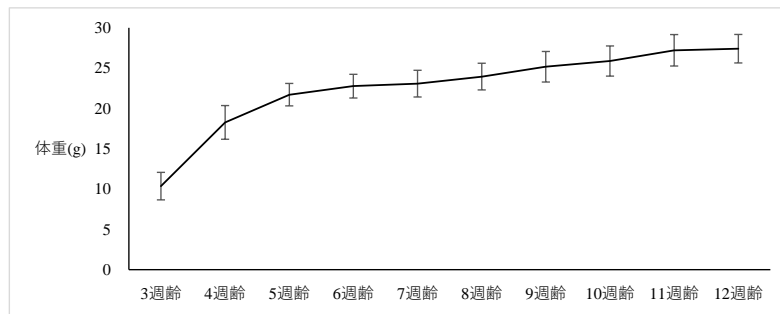


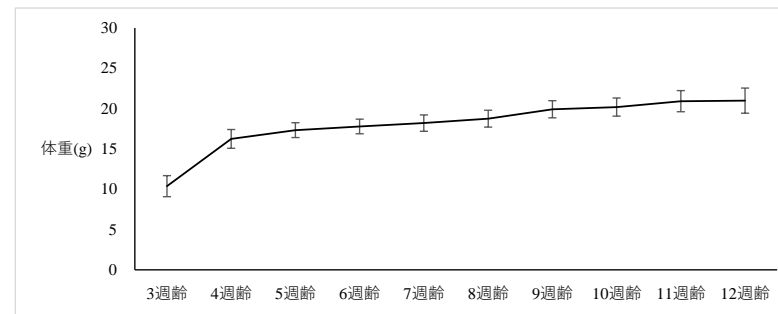
JAX® Mice Strain NOD.Cg-Prkdc^{scid} H2-K1^{b-tm1Bpe} H2-Ab1^{g7-em1Mvw} H2-D1^{b-tm1Bpe} Il2rg^{tm1Wjl} /SzJマウス

体重データ

雄性



雌性



ケージ番号	単位:g										
	3週齢	4週齢	5週齢	6週齢	7週齢	8週齢	9週齢	10週齢	11週齢	12週齢	
No.1	11.4	17.0	24.5	25.8	26.7	23.2	23.3	25.1	25.2	31.3	
	9.0	20.6	21.2	22.3	22.0	28.3	30.1	30.3	31.5	26.3	
	8.0	15.4	20.6	22.8	22.2	24.5	23.2	26.7	27.3	28.4	
	11.4	19.7	20.7	21.3	22.5	22.9	26.5	24.1	27.2	26.5	
No.2	9.9	16.1	21.0	22.7	22.3	26.1	27.2	28.0	26.9	29.0	
	8.4	20.1	21.2	24.7	25.2	22.8	23.3	26.2	25.2	25.6	
	10.6	17.7	23.5	21.5	23.1	25.1	23.4	24.1	29.0	25.4	
	12.1	18.8	21.4	22.2	22.9	22.9	25.4	23.8	24.9	27.3	
No.3	8.1	19.4	21.3	21.7	21.3	23.7	23.1	25.0	25.7	29.0	
	11.2	16.5	20.2	21.6	22.2	23.2	23.9	24.2	27.7	26.5	
	10.6	15.2	20.4	21.3	21.2	22.7	23.8	23.9	25.6	26.5	
	8.8	18.7	21.2	21.8	22.0	22.6	24.0	25.0	26.2	26.2	
No.4	12.1	21.0	24.0	25.3	25.4	23.5	27.8	28.3	29.4	29.3	
	12.5	20.4	24.2	24.1	24.5	25.4	26.8	27.9	29.2	29.8	
	12.8	20.2	23.3	24.7	22.5	25.1	26.1	27.1	27.9	29.7	
	10.0	17.1	20.7	22.0	25.9	26.5	24.7	28.2	29.2	26.8	
No.5	11.7	19.7	23.0	23.4	19.8	24.5	26.0	23.1	24.4	25.2	
	9.6	20.1	21.1	21.0	24.6	20.3	22.1	25.1	23.1	27.3	
	7.8	15.1	19.6	23.7	23.8	24.0	23.8	26.1	27.2	23.4	
	11.3	16.7	22.7	20.5	21.3	21.9	25.4	22.9	27.4	27.1	
No.6	12.5	15.4	21.0	23.6	22.6	24.1	26.6	26.3	27.5	28.9	
	12.5	21.3	22.0	21.7	23.8	24.3	26.3	26.4	29.9	27.4	
	8.2	16.1	20.1	24.4	23.6	22.8	26.8	26.3	27.3	27.3	
	8.2	20.1	22.1	22.2	22.4	24.4	24.5	27.0	28.2	27.6	
n	24	24	24	24	24	24	24	24	24	24	
平均	10.4	18.3	21.7	22.8	23.1	24.0	25.2	25.9	27.2	27.4	
標準偏差	1.7	2.1	1.4	1.5	1.7	1.7	1.9	1.9	2.0	1.8	

※各ケージ内の体重の並びは順不同

JAX® is a registered trademark of The Jackson Laboratory. All rights reserved.

ケージ番号	単位:g										
	3週齢	4週齢	5週齢	6週齢	7週齢	8週齢	9週齢	10週齢	11週齢	12週齢	
No.7	9.8	16.8	18.1	18.6	17.6	19.3	19.5	20.3	19.4	22.7	
	10.7	16.5	17.2	16.9	19.9	17.8	18.9	19.0	23.5	19.7	
	11.2	16.3	16.9	17.6	18.3	18.0	20.0	19.6	19.9	20.7	
	12.1	17.0	17.2	17.4	17.9	18.4	18.9	21.0	21.3	19.1	
No.8	10.5	18.1	18.2	17.3	17.6	18.9	22.2	20.7	18.2	20.2	
	11.4	17.3	18.4	18.5	18.2	20.9	21.2	19.6	21.2	19.4	
	9.4	16.6	16.8	19.6	20.1	18.1	19.1	23.9	22.7	21.3	
	10.0	15.9	18.1	18.6	19.0	19.1	19.7	19.3	19.6	23.9	
No.9	10.7	16.7	17.4	18.1	19.2	20.3	20.9	20.2	20.1	21.8	
	11.9	16.4	17.5	17.8	19.1	19.7	19.2	21.1	22.1	22.7	
	11.5	17.1	18.3	19.3	17.6	18.2	20.1	19.3	22.6	21.4	
	11.4	16.2	17.6	17.5	19.1	20.6	20.2	19.4	20.7	20.3	
No.10	8.0	14.4	18.0	16.9	17.5	17.7	18.7	21.1	22.2	20.5	
	11.9	18.5	15.9	17.4	17.2	19.2	19.3	20.9	19.5	20.2	
	10.3	15.1	18.1	18.9	19.5	18.3	21.6	18.9	20.5	21.5	
	9.5	15.2	16.8	17.3	17.2	18.1	20.7	19.4	21.1	22.1	
No.11	10.8	16.1	19.6	16.3	17.3	18.5	19.0	21.3	20.5	20.3	
	11.3	15.4	16.1	19.0	18.5	19.4	22.2	21.0	23.0	20.8	
	8.8	17.5	16.4	17.0	19.2	19.6	20.1	20.7	21.2	21.7	
	7.6	14.1	17.4	18.4	18.1	19.7	19.9	20.3	21.7	25.0	
No.12	10.5	17.1	17.2	18.0	16.0	18.2	18.7	19.5	19.4	20.4	
	11.3	16.3	16.6	16.8	18.2	17.9	18.8	19.3	20.5	19.1	
	10.8	15.1	15.8	16.6	17.3	17.4	19.2	20.1	20.2	18.1	
	7.7	14.1	16.3	17.0	17.2	16.7	19.9	18.7	21.0	20.8	
n	24	24	24	24	24	24	24	24	24	24	
平均	10.4	16.2	17.3	17.8	18.2	18.8	19.9	20.2	20.9	21.0	
標準偏差	1.3	1.2	0.9	0.9	1.0	1.0	1.1	1.1	1.3	1.6	

※各ケージ内の体重の並びは順不同